

# N-METHYLENE PHOSPHONIC CHITOSAN: A NOVEL SELF- ASSEMBLED TEMPLATE FOR ENAMEL REMINERALIZATION

Kun Tian, Qin Du, Chuhan Liao, Wei Fei

Department of stomatology, Sichuan Medical Science Academy and Sichuan Provincial People's Hospital, Chengdu, Sichuan, China

This is an open access article distributed under the Creative Commons Attribution License, which permits unrestricted use, distribution, and reproduction in any medium, provided the original work is properly cited.

## ARTICLE DETAILS

### Article History:

Received 12 November 2017  
Accepted 12 December 2017  
Available online 1 January 2018

## ABSTRACT

To evaluate the feasibility of phosphonic chitosan membrane in guiding enamel remineralization. We design a organic molecules model to induced the crystallization of hydroxyapatite with 3D-structure in a controllable way under dentin surface in vitro. N-methylene phosphonic chitosan (NPCS) was synthesized via formal dehyde addition and condensation with phosphoric acid in a step reaction. The cross-linking reaction between the collagen on the dentin surface and phosphonic chitosan guided by phosphate ions dental adhesive agent.  $\text{CaCl}_2$  and  $\text{Na}_3\text{PO}_4 \cdot 12\text{H}_2\text{O}$  solutions were added after the crosslinking process. We observed that hydroxyapatite nanorods can be controlled followed by in situ crosslinking process and triggered by conditions of pH and ionic strength. The dentinal tubule were blocked by neonatal hydroxyapatite layer and this composite a continuous structure of columns crystal with size of 10-20nm. The results showed that phosphonic chitosan monolayer can be used as a potential effective modifier in inchoate enamel remineralization.

## KEYWORDS

Hydroxyapatite, N-methylene phosphonic chitosan, Remineralization

## 1. INTRODUCTION

Many Based on a study, tooth hard tissue is the most highly mineralized structure in the vertebrate body and is formed within a unique, extracellular matrix derived through the synthesis and secretion of proteins [1]. Study showed nature enamel crystals have been characterized as carbonate-apatite, while the initial crystallite is not yet identified directly [2]. As adult tooth enamel is not living tissue, it can hardly remineralize after the substantial mineral loss. Thus, the synthesis of enamel through biomimetics is of great interest to dental clinicians. According to research, the key of remineralization or regeneration of tooth hard tissue is finding an appropriate organic template and inducing the process of mineralization. The frequently used agents are fluoride, salivary proteins, casein phosphopeptide amorphous calcium phosphate, or organic polymers [3-7]. However, these approaches either call for too severe conditions to apply in clinics, or reconstruct structures unlike natural enamel. Study showed the formation of Calcium matrix proteins in bones (mainly collagen type I) and teeth (amelogenin) are associated with the nucleation and growth of hydroxyapatite crystals [8]. For mimicked the physiological course to obtain neonatal hydroxyapatite we chose phosphonic chitosan as the crystal growth monolayer. Based on a study, Chitin a naturally abundant mucopolysaccharide, and the supporting material of crustaceans, insects, is well known to consist of 2-acetamido-2-deoxy-b-D- linkage [9]. Chitosan, obtained by alkaline N-deacetylation of chitin, (Fig. 1) is one kind of the most widely used natural cationic polysaccharides. Study showed although it is insoluble at physiological pH, but still shows particularly high biocompatibility and fairly low cytotoxicity [10]. Reports reveal that apatite-chitosan composite would be a candidate for a bioactive material. When a functional group e.g., carboxyl group that is effective for apatite nucleation, is present on the surfaces of carboxymethylated chitin and

gelatin gum gels, then apatite spontaneously forms on these surfaces. Chemical modification of chitosan including acylation, carboxylation, hydroxylation, etherification, Schiff base reaction, N-alkylation, esterification and hydrolysis, oxidation, halogenation and other graft modification [11]. Researchers attaches great importance to phosphate esterification reaction for phosphate group were induced which have special affinity with calcium ions.

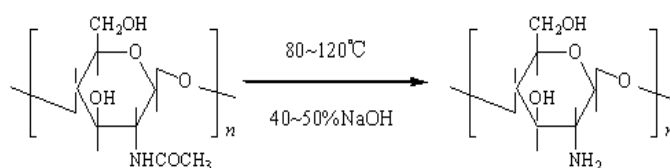


Figure 1: Structure of Chitin and Chitosan

Based on the basic theory, we use phosphonicchitosan molecules model to induce the crystallization of hydroxyapatite to synthesized tooth-like calcium phosphate/hydroxyapatite with 3D-structure in a controllable way in vitro.

## 2. METHODS

### 2.1 Phosphonized chitosan

One equivalent of phosphorous acid in water was added dropwise to one equivalent (w/w) of 2% chitosan solution in acetic acid with continuous stirring for 1 h. Raised the temperature to 70 °C and one part of 36.5%(w/w) formaldehyde was added drop-wise over 1 h with reflux and heating for 6 h. After dialyzed against demineralized water for 48 h, frozen and freeze-dried finally. Figure 2 showed the reaction of phosphonized chitosan [12]. The variation elements on the surface of sample were

investigated by Fourier transformed infrared spectroscopy (FTIR, EQUINOX 55, Bruker Optics, Switzerland).

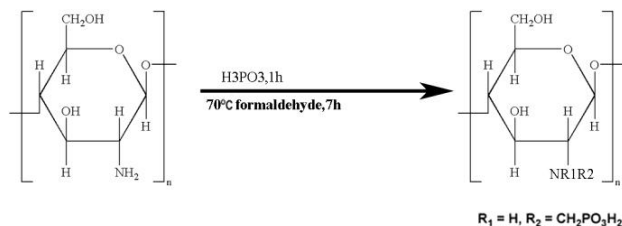


Figure 2: Synthesis of N-methylene phosphonic chitosan

## 2.2 Sample preparation

Human molars were sliced into 1mm thickness disks and etched with 0.5N EDTA to reveal the different orientations of the dentinal tubule. The disks were immersed in 0.02M Tris-HCL buffer (pH7.2,) after cleaned by ultrasonic. The samples were studied by scanning electron microscopy (SEM) (S-2460N, Hitachi, Tokyo, Japan).

## 2.3 Phosphorylation of tooth surface

The molars disks were daubed with phosphate ions dental adhesive agent equably (Prime& BondNT, DentsplyDetreyGmbh). The solidification process induced by curing light is 10 s at least. N-methylene phosphonic chitosan solution(test group) and chitosan solution(contrast group) were daubed to disks of molar after phosphorylation.

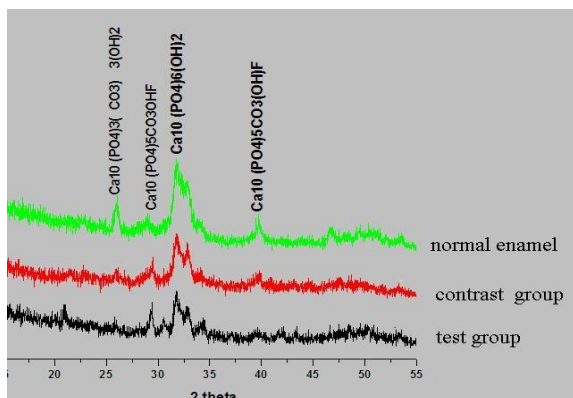


Figure 3: FTIR spectrum of CS and NMCCS

## 2.4 Mineralization in vitro

Then the samples were soaked in supersaturated calcification solution (Table 1) for 24h at 37°C [13]. All the samples were studied by X-ray diffraction (XRD, X'Pert Pro MPD, Philips, Holland), SEM.

## 2.5 Determination of coalescent force

The coalescent force between tooth surface and neonatal crystal Scratching Method (WS-92 scratch tester). The loading range between 0.01N-30N, then automatic continuous loading in the following way: trial is conducted initially in precision 0.1N, scratch speed 2mm/min, loading rate for 10N/min, loading pressure head is cone Angle 120 ° of the diamond, and the tip radius is 0.2mm.

Table 1: Ion concentrations of supersaturated calcification solution (SCS)

ion	Concentration [mM].					pH
	Na+	Ca2+	Cl-	H2PO4-	HCO3-	
SC						
S1	6.5	5	10	5	1.5	5.96
SC						
S2	4	5	10	2.5	1.5	6.31

## 3. RESULTS

### 3.1 Characterization of CS and NMCS

FTIR spectrogram showed organic compounds were grafted to the surface of tooth section. Figure 3 showed the FTIR spectrum of chitosan(CS) and N-methylene phosphonic chitosan(NMCS). 894 cm<sup>-1</sup> and 1154 cm<sup>-1</sup> absorption band were the characteristic band of glycosyl in chitosan. Compared with CS, the NMCS spectrogram showed weak band of -NH in 1600 cm<sup>-1</sup> wave area and sturdy band of acidamide I in 1635 cm<sup>-1</sup> and acidamide II in 1524 cm<sup>-1</sup>. The stretching vibration peak of alcohol hydroxyl lower in 1000~100 cm<sup>-1</sup>, and new vibration peak of PO were observed in 1048 cm<sup>-1</sup>. There were broad absorption band between 2000~3500 cm<sup>-1</sup> that suggest dissociative H<sup>+</sup> in -NH<sub>2</sub> were insteaded by -CH<sub>2</sub>-PO<sub>3</sub>.

### 3.2 Calcium Phosphate Formation on tooth

After aging in SCS for four hours, SEM micrographs showed that the enamel rods were blocked by neonatal hydroxyapatite layer. Fig 4(A) showed the structure of enamel rod after decalcified of EDTA 1h. Type II etching pattern, where the prism boundary is preferentially eroded. Continuous hydroxyapatite layer were formed within 24 hours, and a crystal shape were observed on test groups which NMCS covered the surface of enamel(Fig 4(B)). The mean diameter of the rod was 15±6 nm. Type I pattern with the prism core preferentially eroded were showed in Fig 4(C). In this section the neonatal hydroxyapatite were mutual parallel arrangement in the interspace after eroded(Fig 4(D)). The habit and size of the crystals were similar to those crystals obtained in prism boundary eroded section. In contrast group which with chitosan crosslink to enamel after daubed with phosphate ions dental adhesive, only sheet and irregular neonatal apatite could be observed. There were about 20nm columned precipitation of mineral crystals formed on the surface within 24 hours (Fig 4(E)). On the surface of tooth, hollow tubules of enamel were only filled in by shot prismatical crystal dispersedly and irregularly(Fig 4(F)). Furthermore, both test group and contrast group have a continuous structure of columns crystal with size of 10-20nm.

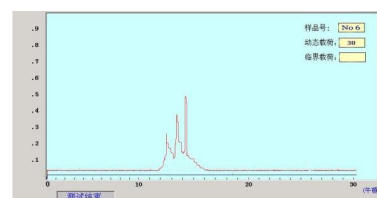
1. normal enamel rod after decalcified 24 h(type II).
2. the form of crystal after mineralization in test group 48 h(type II)
3. normal enamel rod after decalcified 24 h(type I).
4. the form of crystal after mineralization in test group 48 h(type I).
5. the form of crystal after mineralization in contrast group 48 h(type II).
6. the form of crystal after mineralization in contrast group 48 h(type I).

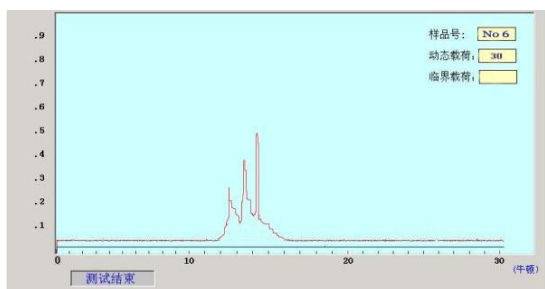
### 3.1 XRD spectrum

XRD spectrum of the neonatal crystal (Figure 5) suggested that several diffraction peaks around 2θ=32° which are corresponding to the expected Bragg peaks for hydroxyapatite, implying that HA crystals were formed. In test group, the peaks around 25-26° were sharper than contrast group, and peaks around 42-47° were smoother than others(Figure 5). This may came from the plentiful organic molecules on the surface of experiment groups which induced the growth of hydroxyapatite and didn't hydrolyze on time. Test group shows sharper characteristic peak than contrast group in 2θ=26°,29°,32°,39°which corresponding to Ca<sub>10</sub>(PO<sub>4</sub>)<sub>3</sub>(CO<sub>3</sub>)<sub>3</sub>(OH)<sub>2</sub>, Ca<sub>10</sub>(PO<sub>4</sub>)<sub>5</sub>CO<sub>3</sub>(OH)F, Ca<sub>10</sub>(PO<sub>4</sub>)<sub>6</sub>(OH)<sub>2</sub> and Ca<sub>10</sub>(PO<sub>4</sub>)<sub>5</sub>CO<sub>3</sub>(OH)F.

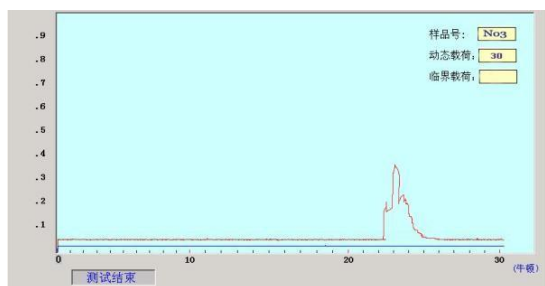
### 3.2 Determination of coalescent force

Figure 6 and 7 showed the coalescent force between tooth surface and neonatal crystal in contrast group and test group are 13~15N and 22~25N.





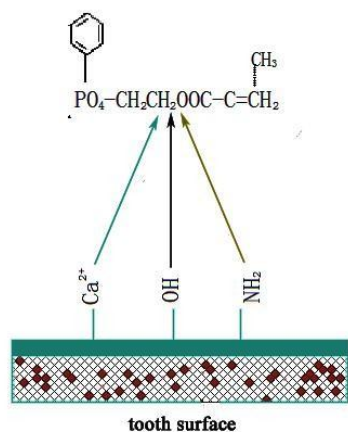
**Figure 6:** Coalescent force between neonatal crystal and tooth surface in contrast group(CS).



**Figure 7:** Coalescent force between neonatal crystal and tooth surface in test group(NMCS).

#### 4. DISCUSSION

Based on a research, although dentin and bone are similarly composed of about 70% hydroxyapatite and 30% organic material, histological analyses demonstrate distinct cellular and morphological differences between these tissues [14]. That's why we chose N-methylene phosphonic chitosan instead collagen to induce the synthesis of Hydroxyapatite which full of phosphate group has special affinity with calcium ions. It should be pointed out that we have tried to deposit the PO<sub>4</sub><sup>3-</sup> onto different substrates, only the iron-plate substrate is able to produce the enamel-like films. The others may support the growth and orientation of the HA crystals but do not produce the closely aligned prismatic structure. The reason for this is still under investigation. There is an interesting phenomenon that the eroded pattern would decide the direction of the neonatal crystal (Fig 4 (B)(D)). Acid attack initiated at the rod sheath space then penetrated into the rod core before extending into neighbouring rods through the rod tail. So in the further study the time of eroded and the variety of acid etching agent such as EDTA and 37% phosphate etc would be observed. Phosphate ions dental adhesive agent is polyanion organic molecules which not only induced the demineralization on surface of tooth, but also adsorbed on enamel through calcium phosphate chemical bond. Study showed the phosphate groups and halogenated phosphoric acid would bonding to Ca<sup>2+</sup> on tooth surface by coordinate bond or formed hydrogen bonds and intermolecular forces with collagen [15]. So dentin adhesive agent can intake calcium and phosphorus from the SCS, then generation apatite is induced (Figure 8).



**Figure 8:** Phosphate ions dental adhesive agent bonding to Ca<sup>2+</sup> on tooth surface by coordinate bond

The successful growth of enamel-like HA under the guide of NMCS not only shows that they are biocompatible, but also shows that under the control of the appropriate signaling molecules and cell-culture conditions it might be possible to induce dentin and pulp formation on the synthetic enamel layer in vitro. The key to specificity in controlled crystallization is the "molecular recognition" effect at the interface between functional groups on the organic macromolecules and ions in the surface of a crystal nucleus [16]. The organic model dental collagen-biologic N-methylene phosphonic chitosan connected by peptide bond and the -COO-headgroup on the peptide can accumulate Ca<sup>2+</sup> and PO<sub>4</sub><sup>3-</sup>, OH<sup>-</sup> ions and build the beneficial lattice configuration for the plane of Hap [17]. In summary, the present work shows we are able to modify the model of mineralization by phosphonized reaction which mimicked the physiological process of mineralization. Both of these neonatal structures are very similar in chemical composition and in structural dimensions to natural tooth enamel. The specific organic molecule model can be used as a potential effective crystal growth modifier [18].

#### ACKNOWLEDGEMENT

This work was supported by a grant from the Applied Basic Research Programs of Science and Technology Commission Foundation of Sichuan Province, China. (No: 2010JY0044)

#### REFERENCES

- [1] Bolte, M., Krefting, E.R., Clemen, G. 1996. Hard tissue of teeth and their calcium and phosphate content in *Ambystoma mexicanum* (Urodela: Ambystomatidae). *Annals of Anatomy*, 178 (1): 71-80.
- [2] Aoba, T., Moreno, E.C. 1992. Changes in solubility of enamel mineral at various stages of porcine amelogenesis. *Calcified Tissue International*, 50: 266-272.
- [3] Lippert, F., Hara, A.T. 2012. Fluoride dose-response of human and bovine enamel caries lesions under remineralizing conditions. *American Journal of Dentistry*, 25 (4): 205-209.
- [4] Yamaguchi, I., Itoh, S., Suzuki, M., Osaka, A., Tanaka, J. 2003. The chitosan prepared from crab tendons: II. The chitosan/apatite composites and their application to nerve regeneration. *Biomaterials*: 24, 3285-3292.
- [5] Fujikawa, H., Matsuyama, K., Uchiyama, A., Nakashima, S., Ujiie, T. 2008. Influence of salivary macromolecules and fluoride on enamel lesion remineralization in vitro. *Caries Research*, 42 (1): 37-45.
- [6] Vashisht, R., Kumar, A., Indira, R., Srinivasan, M.R., Ramachandran, S. 2010. Remineralization of early enamel lesions using casein phosphopeptide amorphous calcium Phosphate: An ex-vivo study. *Contemporary Clinical Dentistry*, 1 (4): 210-213
- [7] Kielbassa, A.M., Oeschger, U., Schulte-Monting, J., Meyer-Lueckel, H. 2005. Microradiographic study on the effects of salivary proteins on in vitro demineralization of bovine enamel. *Journal of Oral Rehabilitation*, 32 (2): 90-96
- [8] Smith, C.E. 1998. Cellular and chemical events during enamel maturation. *Critical Reviews in Oral Biology and Medicine*, 9 (2): 128-161.
- [9] Guerriero, G. 2012. Putative Chitin Synthases from Branchiostoma floridae Show Extracellular Matrix-related Domains and Mosaic Structures. *Genomics Proteomics Bioinformatics*, 10 (4): 197-207.
- [10] Hayashi, Y., Yamada, S., Yanagi Guchi, K., Koyama, Z., Ikeda, T. 2012. Chitosan and fish collagen as biomaterials for regenerative medicine. *Advances in Food and Nutrition Research*, 65: 107-120.
- [11] Ayako, O., Masakazu, K., Kazuki, N., Tadashi, K., Masahiko, M., Takeaki, M., Takashi, N. 2003. Bonelike apatite formation on ethylene-vinyl alcohol copolymer modified with silane coupling agent and calcium silicate solutions. *Biomaterials*, 24, 1729-1735
- [12] Heras, A., Rodríguez, N.M., Ramos, V.M., Agulló, E. 2001. N-methylene phosphonic chitosan: a novel soluble derivative. *Carbohydrate Polymers*, Amsterdam, 44: 1-8.
- [13] Matsushita, O., Koide, T., Kobayashi, R., Nagata, K., Okabe, A. 2001. *Journal of Biological Chemistry*, 276 (2): 8761

[14] Linde, A., Goldberg, M. 1993. Dentinogenesis. Critical Reviews in Oral Biology and Medicine 4: 679-728.

[15] Bowen, R.L., Cobb, E.N., Rapson, J.E. 1982. Adhesive Bonding of Various Materials to Hard Tooth Tissues: Improvement in Bond Strength to Dentin: Journal of Dental Research, 61 (9): 1070

[16] Hoang, Q.Q., Sicheri, F., Howard, A.J. 2003. Bone recognition mechanism of porcine osteocalcin from crystal structure: Nature 425 (6961): 977-980

[17] Vaahtio, M., Peltola, T., Hentunen, T., Ylänen, H., Areva, S., Wolke, J., Salonen, J.I. 2006. The properties of biomimetically processed calcium phosphate on bioactive ceramics and their response on bone cells., Journal of Materials Science: Materials in Medicine, 17, 1113-1125

[18] Muzzarelli, R.A. 2011. Biomedical exploitation of chitin and chitosan via mechano-chemical disassembly, electrospinning, dissolution in imidazolium ionic liquids, and supercritical drying. Marine Drugs, 9 (9): 1510-1533.

